

# SWIFT CREEK ELEMENTARY PTA MEETING



**OCTOBER** 10th, 2023

A small Halloween-themed graphic is positioned above the date. It features a black bat silhouette with its wings spread, flying over the word "OCTOBER". Below "OCTOBER" is a small orange jack-o'-lantern with a carved face. To the right of the pumpkin are three small, curved lines representing a trail or a decorative flourish.

# Approve of the September SCES 2023 PTA Minutes

**Any Changes to the September minutes?**



★ Grade Level

Presentation:

1st

Grade





# 1st Grade - Understanding mClass Home Connect



# How To: Use mCLASS Home Connect

Family involvement is a key element in a student's education. To help start a conversation between parents and students, Amplify offers mCLASS® Home Connect® letters and the new mCLASS Home Connect site. The Home Connect site provides resources for families to use at home with their children to reinforce and practice important reading skills, and can be used by any family, regardless of whether they receive Home Connect letters.

## mCLASS Home Connect Site

The Home Connect site is your portal for finding activities to practice essential literacy skills with your child. Use the site with your Home Connect letter if you have one, or with guidance from your child's teacher.



## My child has an mCLASS Home Connect Letter

If you received an mCLASS Home Connect letter, you can use it to determine which activities on this site are best suited to use with your child. These letters contain results from Benchmark assessments completed during the current time of year using any or all of the following: mCLASS® DIBELS® 8th edition and mCLASS® Early Literacy Measures (ELM). While these letters provide some activities for students to practice related skills at home, this site provides even more options to choose from.

## Understanding my child's Home Connect Letter

Each letter contains an overview and skills review, and additional activities for your child. It describes the measures used to determine your child's proficiency, and what you can do to help develop these skills.

## Activities

The activities section contains a list of recommended activities you can use to help advance your child's reading development. The Home Connect site provides even more of these activities to choose from.

**Bruno Loera** 1st Grade, Beginning-of-Year



### Activities for Bruno

Even if you have just a few minutes each day, you may be surprised by how much you can help Bruno learn to read. Here are some activities we recommend based on Bruno's most recent mCLASS reading test. Most of these activities can be done just about anywhere. Feel free to change them a bit to match Bruno's interests or to fit your schedule.

### Where Bruno needs support



#### Phonemic Awareness

Hearing and using the smallest units of sound in spoken words

#### *Find Specific Sounds*

Have your child and other family members listen for words with a specific sound in family conversation or on television and radio programs, such as words that start with the *s* sound or that end with the *k* sound. Have your family members share their heard words and list them on a piece of paper.

#### *Break the Words Apart*

Help your child take spoken words apart and put them together. Have your child separate the sounds in simple three-letter words, listening for beginning, middle, and ending sounds. For example, pronounce *mom* as follows: *mm-o-mm*. Next, ask your child to blend sounds together to make a word. Say words one sound at a time; for example, you say *sh-ee-p* and your child says *sheep*.



# Let's explore the Home Connect site and it's resources.

## mCLASS® Home Connect®

En Español

This site provides resources for families to practice and reinforce important literacy skills with their children who are being assessed with mCLASS reading assessments. For more information on how to navigate this site, [click here](#).



Phonological  
Awareness

9 activities



Phonics

13 activities



Accurate and Fluent  
Reading

42 activities



Reading  
Comprehension

73 activities

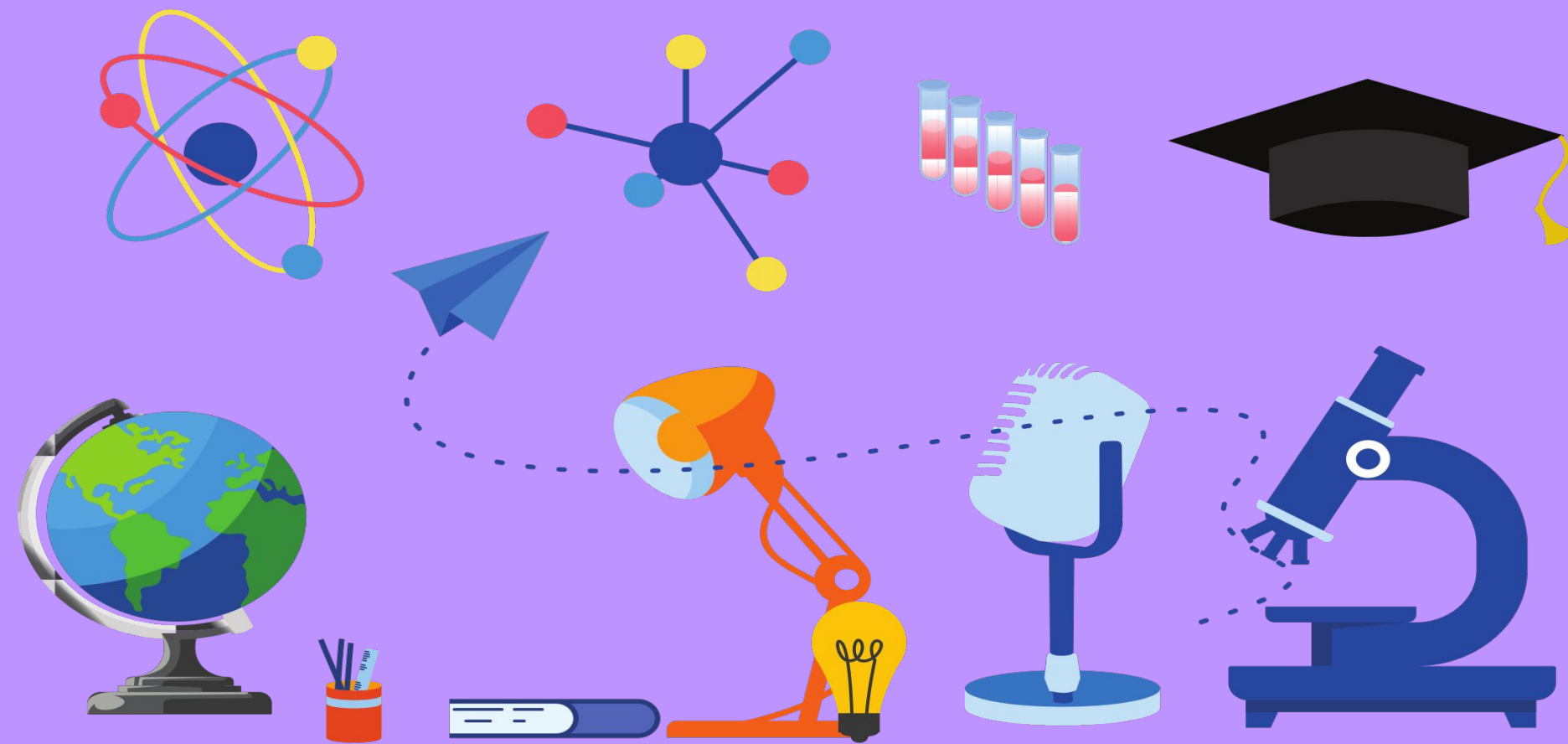




**Ashley Elliott**

# STEAM Night

November 16th, 5:30PM to 7:30PM



**Lauren Nicholls**



# Original Works:



**Julia Ross**



# Fun Run Update

WE REACHED OUR GOAL!



Julia Ross/Michele Calloway



# COUGAR COUNTER



**Sarah Lewis**

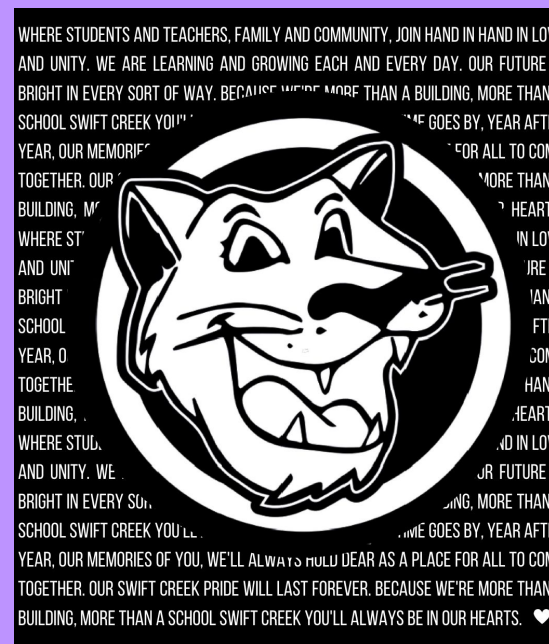
# BOOK FAIR

A collection of stylized, colorful books in various sizes and orientations (red, teal, yellow) scattered around the title. Small red and teal dots are also scattered throughout the background.

**November 13th - 17th**

**Kristen Sherman**





# Spirit Wear



**Rachel Blackmon**



# Hospitality

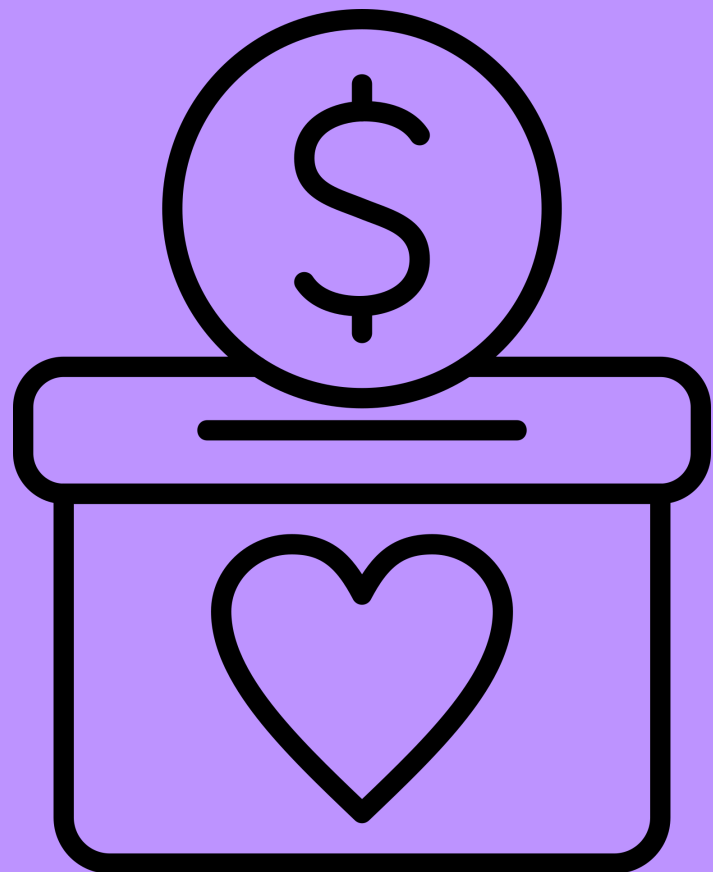


**Kristen Sherman**





# Painless Fundraisers



Spirit Night at  
*City*  
**BBQ**

20% Goes  
to Swift  
Creek  
PTA!

**THURSDAY, NOVEMBER 9**

11 AM-8 PM

1350 KILDAIRE FARM RD-CARY-27511

For online orders scan QR code or  
go to:  
[citybbq.com/order](http://citybbq.com/order)  
Enter promo code: **FundA**

In person: show our flier or mention **FundA**



**Jenae Delayen**

# PTA Google Drive



- Please keep all electronic files in our Google folder, named SCES PTA.
- Follow the link and/or QR code below for step by step directions on how to access and use the folder.
- Reach out to Tina Chadwick, or another board member, if you need further support.

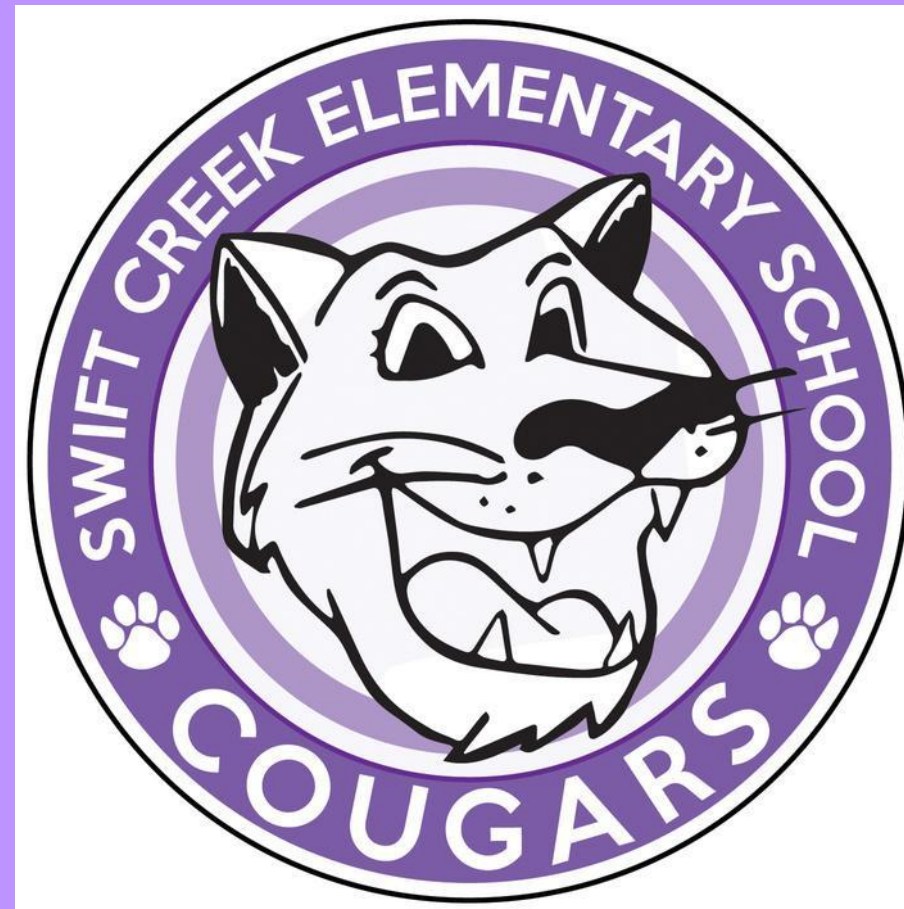


<https://bit.ly/googlefoldersupport>

**Tina Chadwick**



# Principal's Report



**Mr. Propst & Mrs. Smith**

# Next PTA meeting Tuesday, November 14th @ 6:30PM

## - Media Center





THANK  
you

Thank you for coming and have a great night!